



GREATER VANCOUVER  
**WOODTURNERS**  
GUILD

**WOODTURNERS**

CHAPTER 130 OF THE AMERICAN ASSOCIATION OF WOODTURNERS



**Inside this issue:**

<b>President's Column</b> Bruce Campbell	1
<b>Turning 101 Update</b> Gerry Vickers	2
<b>Don Hoskins Defies Gravity!</b> Kerry Deane-Cloutier	3
<b>West Coast Roundup Symposium Update</b> Colin Delory	3
<b>Dale Larson Demo and Class Reminder</b> Art Liestman	4
<b>Cloverdale Wood Show</b> Merv Graham	5
<b>Circle Craft 2006</b> Don Hoskins	5
<b>7th Annual West Coast Woodturning Competition</b>	6
<b>Instant Gallery</b>	9
<b>Announcements &amp; Classifieds</b>	10

**Volume 9, Issue 3**

**November, 2006**

**President's Column - Bruce Campbell**

I would like to start my column this month with special thanks to Dennis Cloutier and Kerry Deane-Cloutier who took it upon themselves to give our newsletter a face-lift. To a person, everyone I have spoken with was dazzled by the changes and I must say the new look is GREAT! Thanks to you both.

The West Coast Woodturning Competition is over for another year and I am pleased to say that it went very well. Participation, sponsorship, and voting were up from last year, and in my opinion the quality of the work was great as well. When I initially review the display it was not clear where one division ended and the next began. That speaks well for the impact that the competition has had on the development of turners in this area and I hope the trend continues in the future.

I would like to give a tip of the hat to Jay Mapson and Merv Graham who were the cornerstones of the Cloverdale success this year. Jay did an outstanding job as the Competition Coordinator and Merv once again did the 1001 things to make the Guild booth look and work well. Thanks, guys.

Don Hoskins, one of the founding members of our Guild, gave the demonstration last month and showed us both how to defy gravity and how to make do when you forget something important. As usual, his presentation was entertaining and informative.



**Instant Gallery:**  
The Set Of 4 - Larry Stevenson

After a break of several years the organizers of Circle Craft had us back as a demonstration group for the 5-day long premier Christmas Craft Fair in the Lower Mainland. I was fortunate to staff the booth on several days and see lots of appreciative, impressed and delighted people go through the booth and enjoy the turning demonstrations. Thanks to Don Hoskins for coordinating the event and all those who volunteered their time at the booth. And a special thanks, again to Merv Graham for lending his JET-lathe-on-steroids, grinder and lots of other things for the weekend.

Our almost-annual auction was held at the meeting last month to raise money toward

*(Continued on page 2)*

**Next Meeting: November 22, 2006**

Sapperton Pensioners' Hall  
318 Keary St., New Westminster.  
Meeting starts at 6.30

**Forum on Form & Finish:**

Bring in a completed piece and receive valuable input from other turners.

**Focus on Fundamentals:**

Lance Rossington - Basic Cuts I

Claudia Hayward - Interesting Projects  
Both will be Christmas Related

**Main Event:**

Merv Graham - Winged Bowls

**November Food**

**Suppliers:**

Gary Hack, Steve Hansen, Gord Hart, Dale Harvey, Zig Hathorn, Claudia Hayward



**Instant Gallery:**  
Art - Sandy Howkins - Maple -  
14in x 18in - Tung Oil

**“Many know Merv as Mr.  
Grumpy”**



**Instant Gallery:**  
Bowl - Ed Auld - Red Cedar -  
8in x 1in - Tung Oil and Wax



**Instant Gallery:**  
Bowl - Plumb Bob - Birds Eye  
Yellow Cedar - 8in x 5in - Min-  
eral Oil Beeswax

## President’s Column (cont.) - Bruce Campbell

*(Continued from page 1)*

putting on the 2007 West Coast Round-Up. Thanks to a number of visiting demonstrators and club donations, we had about 30 items to offer. Bidding was terrific and sometimes tense and by the time the dust settled we had raised over \$1100. It was a lot of fun and I look forward to our Symposium next September where the money we raised will be put to good use.

Coming up on Saturday December 2<sup>nd</sup> Dale Larson from Oregon will give an all-day demonstration at Sapperton Hall, with classes on Sunday and Monday. Dale is a well known bowl turner who has demonstrated extensively around the world. I was fortunate to attend his demonstration and class (and buy one of his bowls) when he was last in Vancouver and can say that he is a wealth of information and talent. I highly recommend that you attend. Remember, if you are a paid-up member you may choose this demo to be one of you two freebies. Non-members are also welcome to attend Dale’s demonstration – the cost will be \$25. I understand there are still several places available in his Monday class. Cost is \$150 and you must be a member of an AAW Chapter Guild to participate. See me, Don Hoskins, or Art Liestman if you are interested.

On the second Saturday in December Turning 101 resumes. This excellent program focuses on helping new turners get a good start. For details see Gerry Vickers’ article below.

A reminder that the President’s Challenge this month is to turn something using multiple-centers. I saw several examples at the booth this weekend and hope to see lots more on the table at our next meeting.

Finally, I strive to make sure that I give credit to all those who volunteer to make this Guild the wonderful success that it is. But sometimes a simple thank you is not enough. And this month I would like to single out a member who deserves special accolades.

Since he joined the GVWG, Merv Graham has gone out of his way to be a contributor. I do not think he has missed a single Turning 101 session since they began, first as a participant and then as an assistant. Merv has been the Go-To guy for virtually every Guild booth since he started; be it the Cloverdale Show, the Richmond Carvers Show, school events, this recent Circle Craft show, and so on. He is also the Guild Treasurer and lends both his skills and his enthusiasm to the running of our group. Many know Merv as Mr. Grumpy but, just like his pseudonym in the Seven Dwarfs, he has sincere concern for the welfare of others, especially new turners. Merv was a relatively new turner when he started but has come a long way. But for all Merv has gained from us, we have gained immeasurably from him. Over the next while, please take a moment to stop and say thank you to Mr. Grumpy.

## Turning 101 Update - Gerry Vickers

The Guild sponsors Turning 101 sessions where new turners are shown basic techniques and safety, and then practice them by doing a simple project. We cover many topics over the

course of each all-day session where a main facilitator and several mentors help you on the way. These sessions are open to all paid-up members, with

*(Continued on page 3)*

## Turning 101 Update (cont.) - Gerry Vickers

(Continued from page 2)

first choice given to new turners up to a maximum of 12 participants.

Our first session will be held on Saturday December 9, 2006 at the Sapper-ton Hall starting at 9:00 a.m.

sharp. The project this time will be Xmas ornaments. If you are interested in this session or want more info please email me at gb\_vickers@yahoo.ca, call me (604-463-0670) or talk to me at a gathering

or meeting. The cost is \$25.00 if you bring your own lathe or \$35.00 if you use a club lathe. We only have three lathes, so book early so you are not disappointed.

In 2007 we have the hall booked for a session on the second Saturday of each month, and we want them to be as useful and relevant as possible. If there is a subject that you would like us to cover please let me know.



**Instant Gallery:**  
Box - Merv Graham - Black Walnut - 2in x 2in - Wax

## Don Hoskins Defies Gravity! Kerry Deane-Cloutier

The Don Hoskins traveling comedy show made an appearance at our last meeting. Actually the "Gang of Three" twisted Don's arm until he agreed to do a demo at the last minute to stand in for another demonstrator who couldn't make it. Don bravely stepped into the breach and agreed to do October's demo. He picked the cone and slope project out of *Woodturning Wizardry* by David Springett. Anything that appears to roll uphill seems to defy gravity. This project is a double ended cone which appears to roll up a couple of ramps. Don turned the cone, then mounted it in a donut chuck to turn the nub off the end of the cone. He recommended bringing up the tailstock when mounting the piece in the chuck,

as this helps ensure it is centred. Make sure the screws in the donut chuck are long enough, or it will not hold and the piece will bounce off the wall or watchers. Double-sided tape can also help, or do what Don did – take a few cuts off the inside of the chuck to give the cone a bit more room. The cone can be made more interesting by gluing up a blank with veneer strips. The demo was actually a collaborative demonstration, as Marco Berera made the necessary flat-work props before hand. At the end we could see that it worked, and did indeed seem to roll uphill.

Don's dry humour made for a very entertaining demo. Thanks Don!

**"Don bravely stepped into the breach and agreed to do October's demo"**



**Instant Gallery:**  
Container - Larry Stevenson - Lombardy Poplar Cocobolo - 4in x 5in - Lacquer

## West Coast Roundup 2007 - Symposium Update

Work continues on preparations for next year's Symposium, with a team of 13 individuals now involved. Each one is responsible for one aspect of the overall project. Anyone else wishing to participate should leave their name with the Volunteer Co-ordinator, Steve Kent.

A notice has been posted on our web-

site and a brochure has been designed that is now in the hands of the printers. We are also working toward establishing an on-line registration scheme whereby people can complete and forward the registration form and either mail their payment or pay on-line



**Instant Gallery:**  
Medium Bowl - M Gendron - Apple - 8in x 5in - Paste Wax

## Dale Larson Demo and Classes - Art Liestman



**“Dale’s specialty is turning functional, pretty bowls.”**

A quick reminder that Dale Larson will return to the GVWG on Saturday, December 2<sup>nd</sup> for a demo and for hands-on classes on Sunday, December 3<sup>rd</sup> and Monday, December 4<sup>th</sup>.

Dale lives in Gresham, Oregon, which is south of the Columbia River just east of Portland. He started turning in 1978 when he bought his first lathe. Dale’s specialty is turning functional, pretty bowls. He is also known for threading, spheres, and spiral work. His work, primarily bowls, is sold in art galleries around the United States.

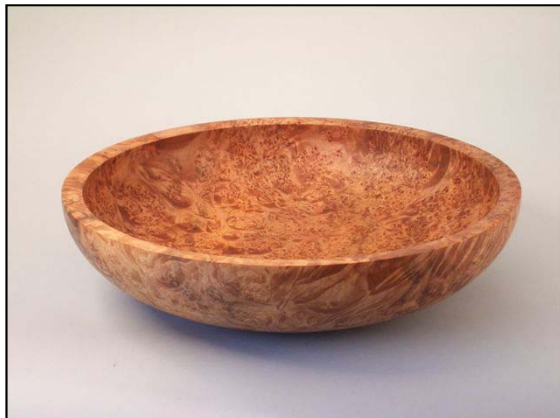
Dale is a seasoned demonstrator and writer. He has published articles about wood and woodturning in *American Woodturner*, *World of Wood*, *Woodworker West*, and *Woodturning Design*. Dale has traveled extensively doing demonstrations for clubs and at various symposia including the AAW symposium.

On Saturday, December 2<sup>nd</sup>, Dale’s demo will be held at the Sapperton Pensioners Hall from 9:30 am to approximately 4pm. There is a \$25 charge to attend the demo. (Members may choose this demo as one of their two “free” demos for the membership year.) Dale dispenses a lot of great practical advice during his demos, plus he’s very entertaining. Don’t miss this one!

Here’s what Dale says about the demo: “I will start with showing how to cut a blank out of the tree. I will then rough out a bowl out of wet wood and talk about drying the bowl blanks. I have two handouts for this stage. I will then finish turn a bowl. That way the attendees can see the whole process from tree to bowl. I will probably turn a second bowl and show different beading and turned decorations on the outside of bowls. I will then spend some time showing how to turn a sphere and making ball boxes.”

Dale will teach hands-on classes on Sunday, December 3<sup>rd</sup> and on Monday, December 4<sup>th</sup>. Both classes will be run at Island Woodcraft in Coquitlam from 9:30 am to approximately 5pm. The class fee will be \$150. We still have a couple of spots in the Monday class, so contact Art Liestman at [artliestman@shaw.ca](mailto:artliestman@shaw.ca) to get a space.

Dale describes the class as follows: “We will start by showing how to cut up the log. Each student will start with a wet blank. I will show them how to put it between centers to balance the grain pattern. We will rough it out and discuss drying. Each student will also use a dry bowl blank. We will go through the entire bowl turning process. If there is interest we can also turn some spheres.”



## The Cloverdale Wood Show - Thanks to All Volunteers - Merv Graham

One of the most frustrating and difficult jobs in this Guild is the scheduling of volunteers for the various events that we do. The wood show is particularly difficult as there is little time to set it up after the summer break. The past wood show has made me very proud of the 43 GVVG members and the 2 FVWG members who gave up a good part of the weekend to make the Woodshow Competition and display such a great success. There were 110 spaces that needed filling so this means that a lot of people did double shifts.

The thing that really amazes me is those members who live out of the GVRD who come in and do their share particularly the person who got up early enough to catch the ferry from the island to be at Cloverdale for the opening of the show on Saturday. I am not going to name all of you as I am afraid it would take up a lot of newsletter space. I say to each of you a heart felt thanks for your support. It makes me proud to part of an organization that has such great members.

## Circle Craft 2006 Don Hoskins

The Circle Craft Association holds a Christmas craft sale at Canada Place each fall. The fair lasts for 5 days and has crafters from all over Canada. Our Guild was asked if we would demonstrate woodturning.

The executive decided to take up their offer of free space among the 260 Crafters. I agreed to look after the event for the Guild, and recruited a group of 16 volunteers who demonstrated our craft (art) and spoke to the public. As Bruce told those attending, this event and ones like it are one of the few places one can still see and enjoy hand work in our automated society. It is therefore incumbent on groups like ours to participate.

We had an exciting instant gallery that drew many questions from the public. With care and supervision we turned small objects to the delight of the audience.

I would like to thank all the participants for their good work. I especially want to thank Merv Graham for his major contribution, especially after he made a major contribution to the Cloverdale Show. Bruce was a good cleanup man and nearly got towed by a very officious Cop. If we are asked again next year I would very much like to have members that are beginning to turn to come and turn. It would be such a great opportunity to learn to turn for the public.



**Instant Gallery:**  
Potpourri Bowl - Clayton MacGregor - Maple - 5in x 2in - Tung Oil



**Instant Gallery:**  
Salad Bowl - Jared Altman - Birch - 12in x 4in - French Polish



**Marco Working, Bruce Supervising**



**Circle Craft Rookies Kerry & Dennis**



**Circle Craft Veteran Claudia Hayward**



1st Place Open Class - Ron  
Dunn, Birch Hollow Form  
\$1,000 prize

***“We're global now,  
having entries from New  
Zealand, California, and  
Minnesota ”***



2nd Place Open Class - Ron  
Dunn  
Pierced Vessel  
\$750 prize



3rd Place Open Class - Heidi  
Canuel  
Waiting on the Moon  
Triton Respirator

## 7th Annual West Coast Woodturning Competition Jay Mapson

I don't think many of us realize how much hard work goes on behind the scenes of a really good show like a woodturning competition. The amount of organizing that has to happen would certainly drive the average person to the nearest tavern. Fortunately, there was a lot of help from people who make it look easy. The volunteers who were handing out ballots had a great time socializing with each other and with the general public as well. Our recent guild meeting had quite a few new faces, many of whom heard about the Greater Vancouver Woodturners Guild through the exposure of the competition.

There were 30% more entries, coming from 25% more entrants. We're global now, having entries from New Zealand, California, and Minnesota as well as quite a few from Washington State and the interior of the Province of British Columbia. Many of the entrants are AAW members and WoWies, but most of them are Greater Vancouver Woodturners Guild members with a smattering of Fraser Valley Guild members. For the last few years, our competition has been judged by the people attending the Cloverdale Wood Show; with 98 pieces, this is becoming a daunting task for the average viewer. There were 5600 votes cast in 4 Classes over the 3 day show.

With 20% more donations from sponsors (how could we do this without sponsors?) we gave away \$6000 in cash and merchandise, from First prize of C\$1000, all the way to \$25 gift certificates and gift bags of sponsors' products. We also gave away medals to the winners, which turned out to

be a warmly welcomed surprise. This year we also honored 4<sup>th</sup> place with Honorable Mention Medals and prize packages. Comments were made that next year we'll need podiums for the winners to receive their medals as a warm up to the 2010 Winter Olympics.

The 7th annual West Coast Woodturning Competition held by the Greater Vancouver Woodturners Guild was a huge success. I want to express my thanks to all who were involved, the volunteers, the demonstrators at the booth, the entrants and everyone else who helped in their own way. What a wonderful experience.

I'm looking forward to the 8th.

**One last important note;** On November 25th and 26<sup>th</sup>, the weekend after the November guild meeting, the Greater Vancouver Woodturners Guild will be hosting another Wood Sale presented by the West Coast Woodturning Competition's major sponsor, Specialty Wood & Veneer Log Supply. This sale will be held at 9072 Cedar St. in Mission starting at 9:00am, Saturday and continuing on Sunday. Watch for further notices to come out soon. The prices will be very good, well worth the effort of the long drive for those of us who live in the lower mainland. The wood will include burls, spalting, crotches and lots of deep figuring, so come early to get the best selection. You'll be able to choose the log and section you're interested in; staff will be on hand to custom cut the piece you want. Plan to stock up for all of your major projects throughout the year to come and support the Competition.

## West Coast Woodturning Competition



Honorable Mention Open Class, Larry Steven-  
sen - Shamballah Olla Form, 10" Saw Blade



1st Place Intermediate Class - Rich Schmid  
Birch Burl Hollow Form, \$750 prize



2nd Place Intermediate Class - Ross Patterson  
Holey Bole, \$500 Prize



3rd Place Intermediate Class - Len Sawyer  
SuperNova2 Chuck



Honorable Mention Intermediate Class - Al  
Koehn, Birch Burl Hollow Form, \$50 Lee Valley  
Gift Card



1st Place Novice Hollow Forms - Jerry Holmes  
\$100 prize

## West Coast Woodturning Competition (cont.)



2nd Place Novice Hollow Forms - Jerry Holmes  
Spalted Beech Hollow Form, \$75 Prize



1st Place Novice Spindles - Jay Mapson  
Goblet, \$100 Prize



2nd Place Novice Spindles - Ray Schifferns  
Deer Antler Pen, \$75 Prize



1st Place Novice Bowls - Julian Lee  
Madrone Bowl, \$100 Prize



2st Place Novice Bowls, Julian Lee  
Maple Burl Bowl, \$75 Prize



1st Place High School - Amy Wong  
Checkerboard Platter, \$200 Prize



### Instant Gallery



Salad Bowl - Rich Schmid - Birch Burl - 14in x 4in - Salad Bowl Finish



Platter - Clayton MacGregor - Maple - 12in x 1-5in - Tung Oil



Small Bowl - D&M Gendron - Apple - 5in x 3in - paste Wax



Urn - Marco Berera - Maple - 2-25in x 3-5in - Buffing



Container - Larry Stevenson - Lombardy Poplar - 6in x 5in - Lacquer



Platter - Bruce Campbell - Maple - 14in x 2in Lacquer

## Classifieds:

### For Sale:

Everybody went to Cloverdale, and now they want to sell their old stuff.

Have New Lathe Must Sell Old Lathe. "Craftex" wood lathe, model B2198, from Busy Bee. Max length 33 1/2", max diameter 12" over bed. Variable speed 600-2000 rpm. 1/2 hp motor, 110 V 1 phase. Was a good friend for 3 yrs. Reg. price \$399, on sale \$345. Now \$125. Contact: Ron Kredba, Guildford Area, Surrey. H: 604-588-3608, C: 604-790-2762

**Lee Valley Portable Dust Filter System.** Filters up to 1 micron. ~ 30" x 15". Yours for \$70.00. Call Fred at 604-247-1202.

**King 16" Bandsaw-** comes with 4 new blades, \$500. General midi lathe, 2yrs old, faceplate, spur drive, and live center. \$175. Call Lance at 604-462-9985.

**Free to good home: Used oil drum,** cut down to about 35 gallons for use as a boiler for wood. Contact Bruce Hodgson at 604-929-6305 or Brucehodgson@shaw.ca

## Announcements:

**Island Woodcraft** regretfully informs us that as of January 1, 2007 they will be reducing the Guild discount from 10% to 5%. However, the new 5% discount will be extended to include regularly priced machinery. The discount will not be applied to sale merchandise.



### Instant Gallery:

Platter - Bruce Hodgson - Quilted Maple - 9in x 2in

## GVWG Officers, Appointees and Volunteers

### PRESIDENT

Bruce Campbell 604-944-3028

### VICE PRESIDENT

Steve Hansen 604-585-0638

### SECRETARY

John Weir 604-787-9220

### TREASURER

Merv Graham 604-272-3525

### MEMBERS AT LARGE

Colin Delory 604-576-1172

Gerry Vickers 604-463-0760

Jay Mapson 604-723-8692

Marco Berera 604-274-7594

David Wagner 604-983-3852

Georges Leroux 604-541-4710

Steve Kent 604-209-3700

Rich Schmid 604-538-7012

Claudia Hayward 604-462-7597

Don Hoskins 604-939-6808

### LIBRARY ACQUISITIONS ADVISOR

Don Hoskins 604-939-6808

### EDUCATIONAL COORDINATORS

Marco Berera 604-274-7594

Steve Hansen 604-585-0638

Larry Stevenson 604-438-3947

### LIBRARIAN

Rich Schmid 604-538-7012

### WOOD EXCHANGER

Steve Fairbairn [sgfmail@shaw.ca](mailto:sgfmail@shaw.ca)

### FOOD CHIEF

Lance Rossington 604-462-9985

### FOF COORDINATOR

Lorne Nelson 604-596-9848

### TURNING 101

Gerry Vickers 604-463-0760

### NEWSLETTER

Dennis Cloutier & Kerry Deane-Cloutier 604-468-0605

[gvwg@runningdogwoodworking.com](mailto:gvwg@runningdogwoodworking.com)

### DIGITAL PHOTOGRAPHY

Gregg Parsons 604-542-9066

### WEBMASTER

Steve Fairbairn [sgfmail@shaw.ca](mailto:sgfmail@shaw.ca)